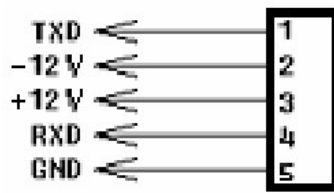


## **Datalogger and USB Interface**

Wiring Hardware .....	2
Hardware Requirements and Setup .....	3
Software Requirements and Setup .....	4
Communicating Operation .....	6
Run the Software .....	6
Download.....	7
Sampling Time.....	9
RTC.....	10

## Wiring Hardware

### USB Diagram



## **Hardware Requirements and Setup**

### **PC HardWare Requirements :**

HDD, CD Rom, 486 PC or above, with available USB port

EGA or higher monitor

4M bytes or more memory size

### **PC HardWare Setup :**

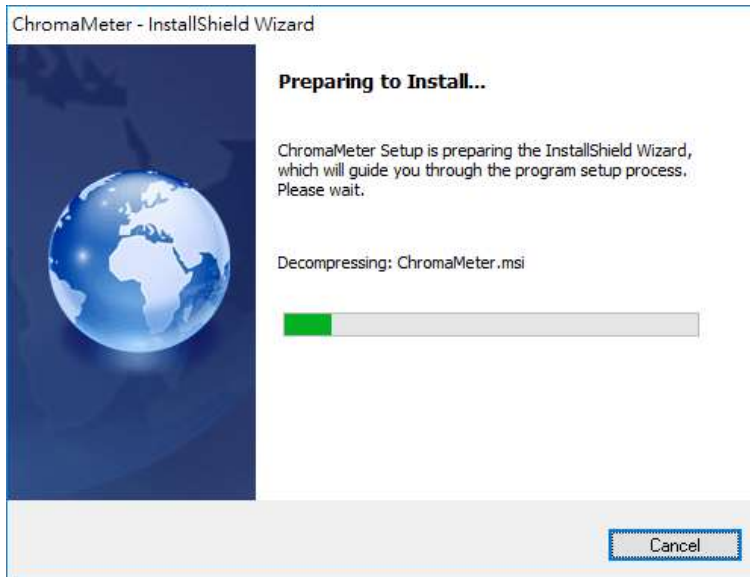
Connect the Meter with PC by USB cable

## Software Requirements and Setup

- 1 Start up windows 7 / 8 operating system
- 2 Close all other applications
- 3 Insert the disk in CD drive  
( if autorun does not start, open the CD drive  
then execute "setup.exe" )

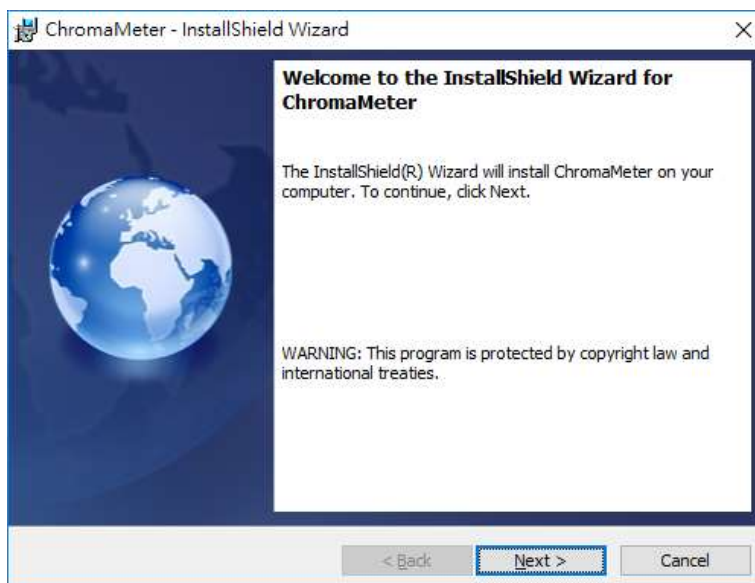
Follow the on-screen instructions.

1).



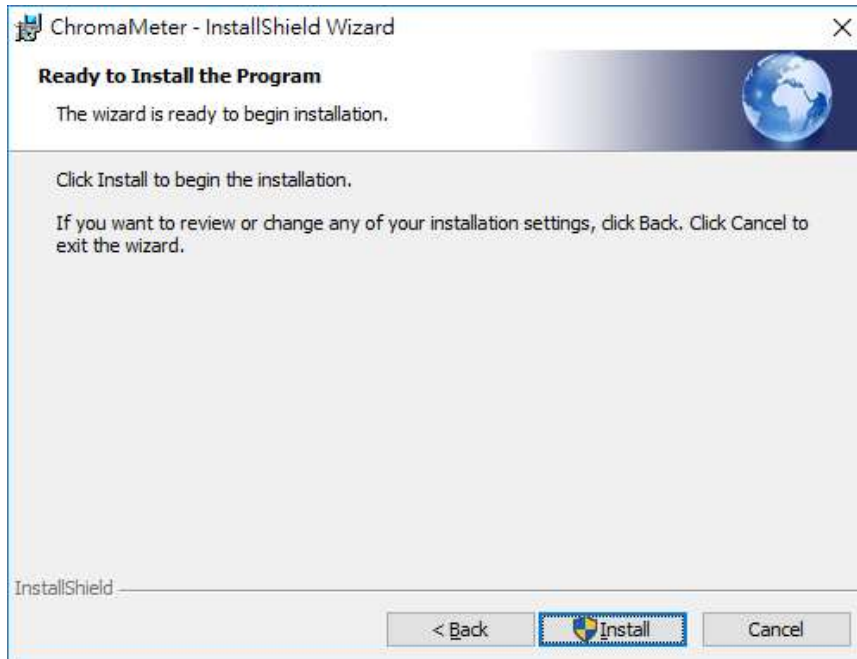
Setup will run automatically.

2).



Click Next> button

3).

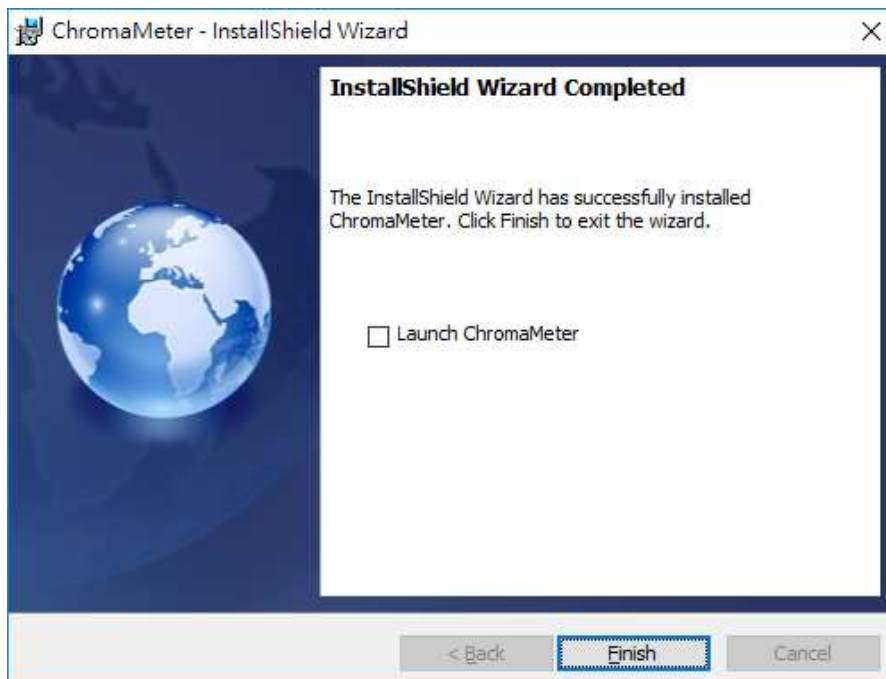


Click Install button

If there shows a "User Account Control" window that asks "Do you want to allow the following program from an unknown publisher to make changes to this computer?"

Click Yes button

4).



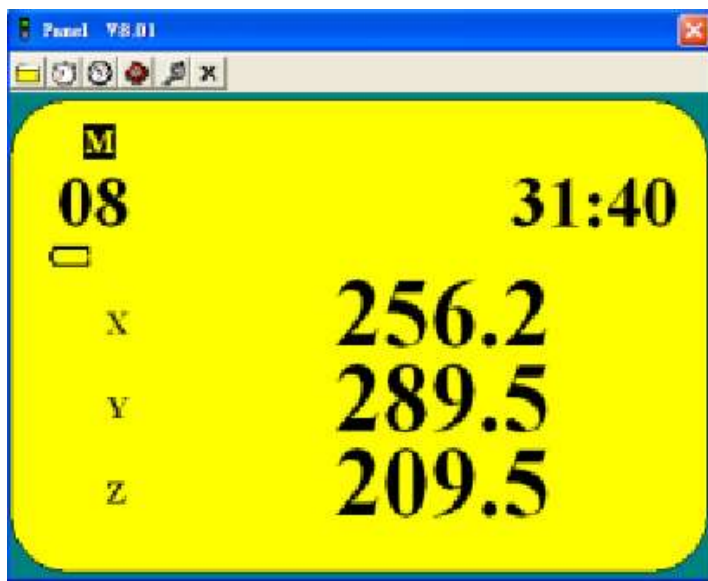
Click Finish button to complete.

## On-Line Operation

### ■ Run the software




1. Click
2. Main software screen

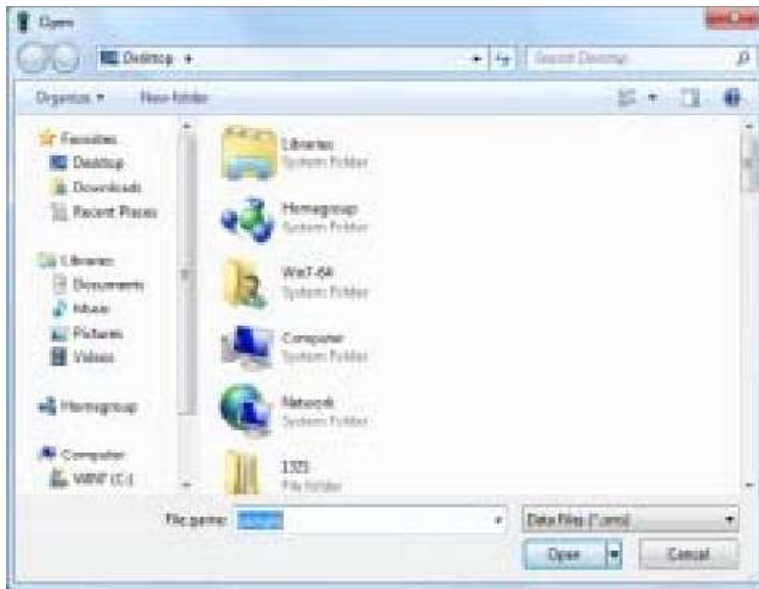


If no connection then there shows "No Connection" on the screen

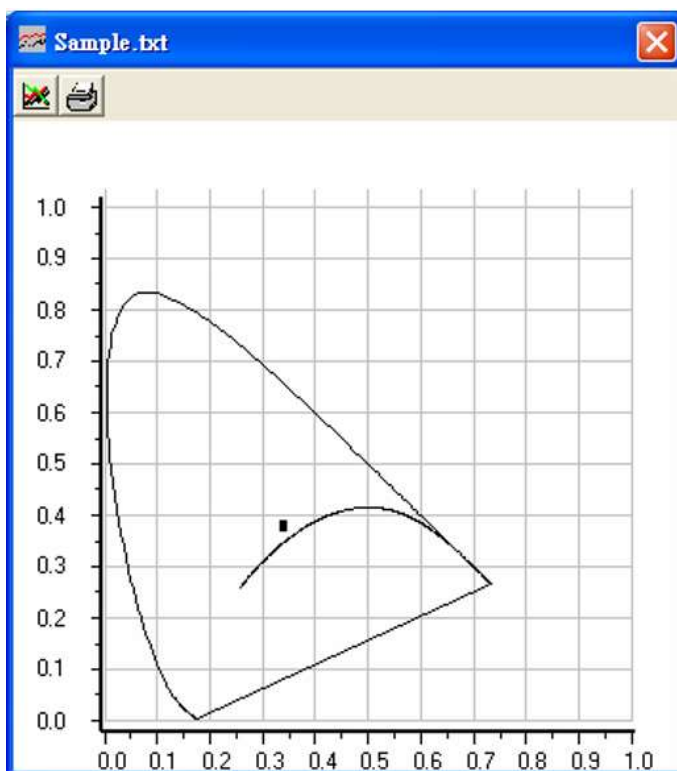
## ■ Download Data

### 1. Download Data from Hard Disk

Click  button. The Open window, shown below, appears

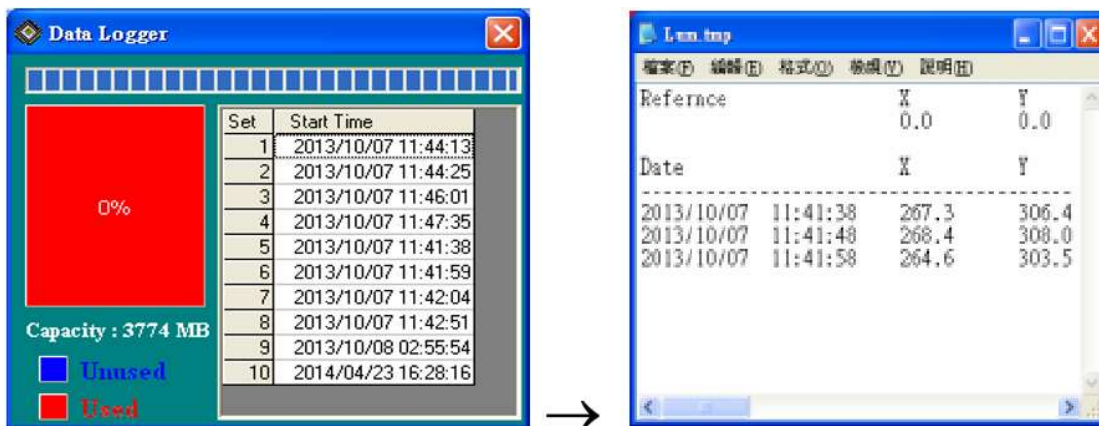


Input the file that was selected earlier and then click the Open button.




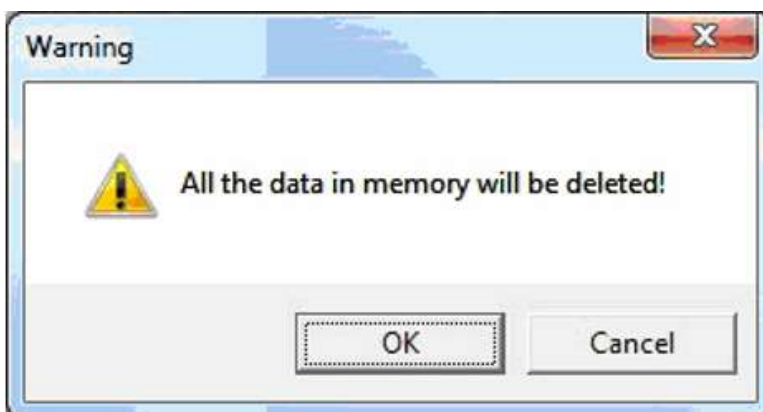
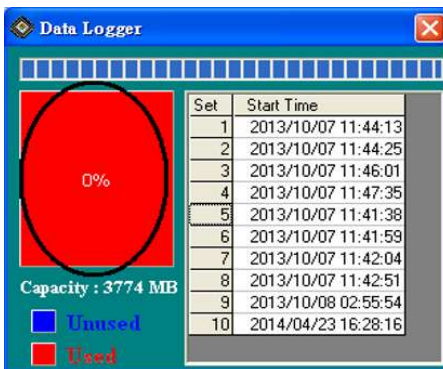
## 2. Download Data from EEP ROM

Click  button. The Data Logger window, shown below, will open.



Click on a SET number to view the set's details. For example, in the window above, there are 10 sets from which to choose. The list rightside is an example of an opened set.

To erase saved data in EEP ROM, click  in the Menu Bar or the Memory label (see below) in the Data Logger window




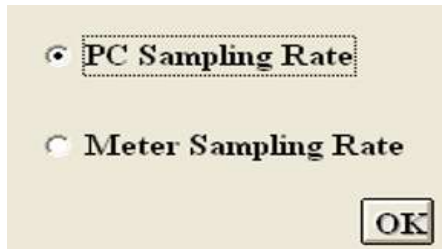
Press OK to confirm.



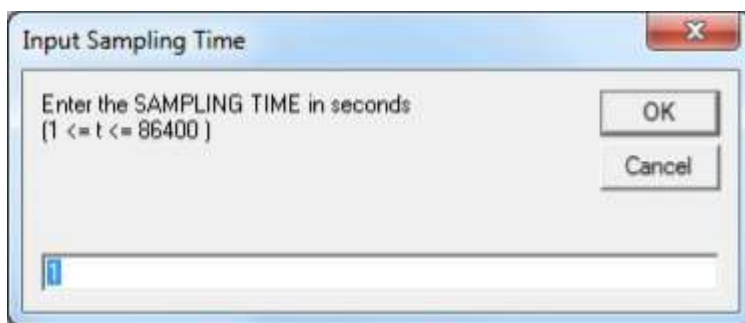
## ■ Sampling Time

**PC Sampling Rate:** (rate at which the PC collects readings while connected to the meter)

Click  on the **Menu Bar**.



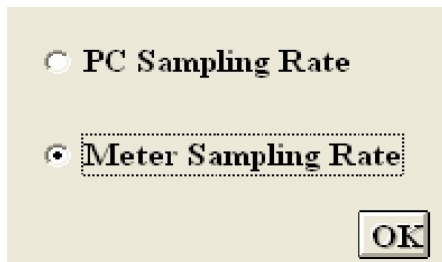
Choose "PC Sampling Rate" and then click "OK" button.



Input a sampling time and then click "OK" button to confirm.

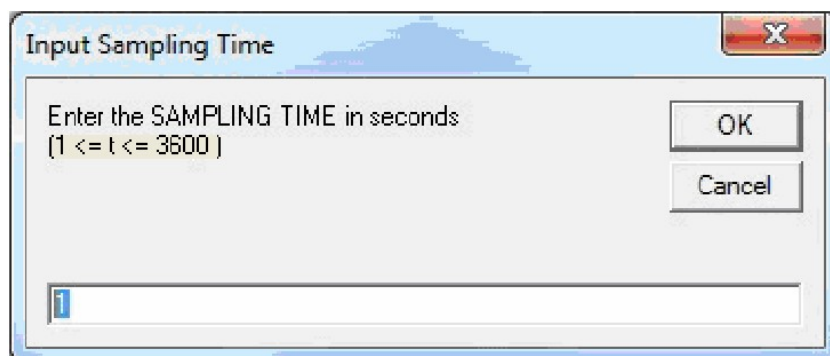
**Meter Sampling Rate:** (rate at which meter stores readings)

Click  on the **Menu Bar**.




Choose "Meter Sampling Rate" and then click "OK"

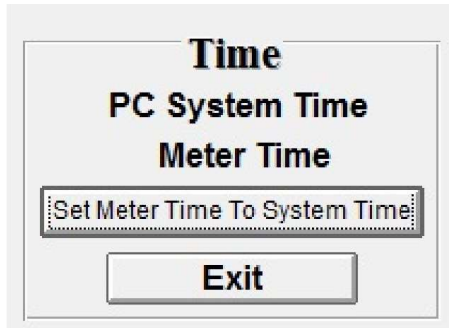
button.



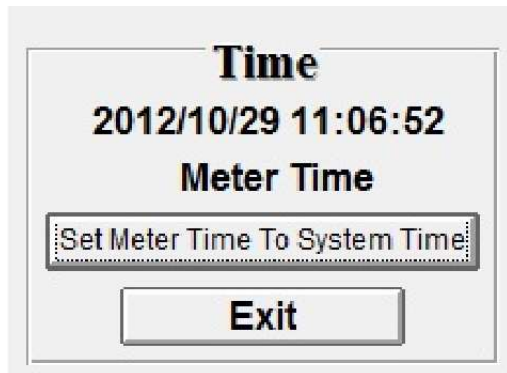
Input a sampling time and then click "OK" button to confirm.


## ■ RTC ( Real Time Clock)

Click  on the Menu Bar to set the meter time to PC system time.



Click **PC System Time** to show PC System Time or **Meter Time** to show Meter Time.



Click  to set the meter time to PC system time.

